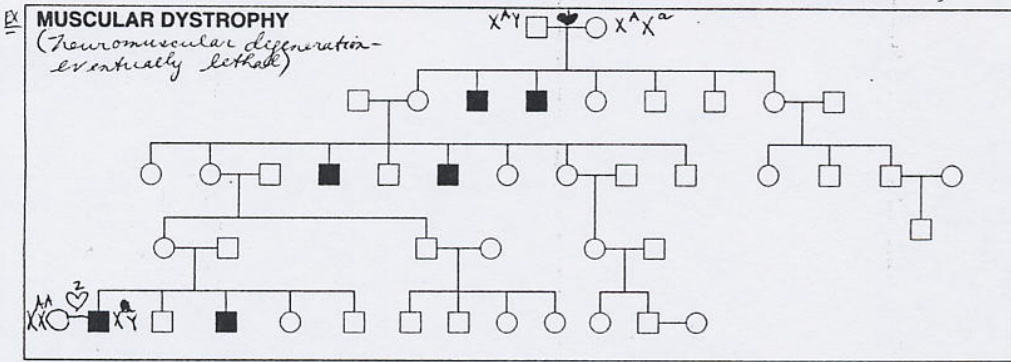


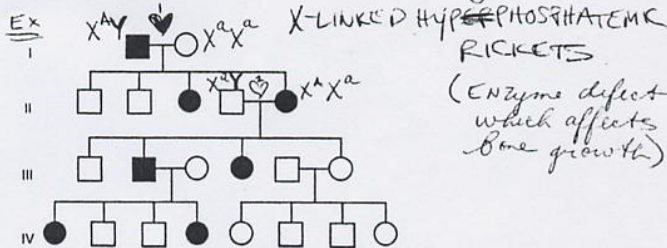
X-LINKED RECESSIVE:

DR. MEDWIDEK
SB 3 P. 14, SL 2



- Characteristics of X-Linked Recessive Inheritance**
1. The incidence of the trait is much higher in males than in females.
 2. Heterozygous females are usually unaffected, but some may express the condition with variable severity as determined by the pattern of X inactivation.
 3. The gene responsible for the condition is transmitted from an affected man through all his daughters. Any of his daughters' sons has a 50 percent chance of inheriting it.
 4. The gene is ordinarily never transmitted directly from father to son, but it is transmitted by an affected male to all his daughters.
 5. The gene may be transmitted through a series of carrier females; if so, the affected males in a kindred are related through females.
 6. A significant proportion of isolated cases are due to new mutation.

X-LINKED DOMINANT:



- Characteristics of X-Linked Dominant Inheritance**
1. Affected males with normal mates have no affected sons and no normal daughters.
 2. Both male and female offspring of female carriers have a 50 percent risk of inheriting the phenotype. The pedigree pattern is the same as that seen with autosomal dominant inheritance.
 3. For rare phenotypes, affected females are about twice as common as affected males, but affected females typically have milder (though variable) expression of the phenotype.

EXCERPTS FROM:
THOMPSON + THOMPSON,
ALLOTT