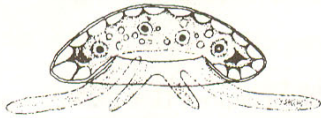


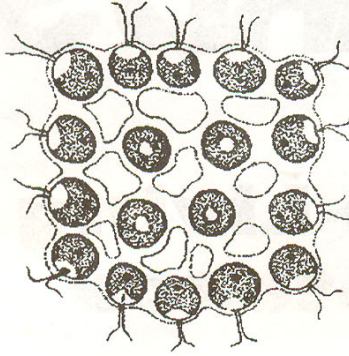
Top View

Side View



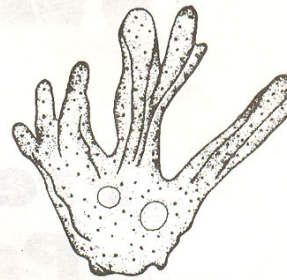
Arcella

45–100 μm in diameter



Gonium

Colony up to 90 μm in diameter



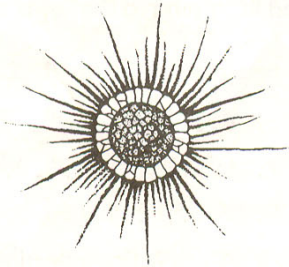
Pelomyxa

1–5 mm, monopodal length



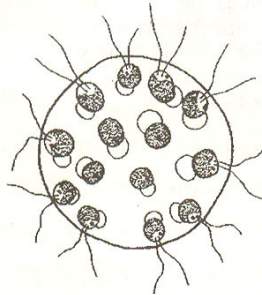
Spirostomum

1–3 mm in length



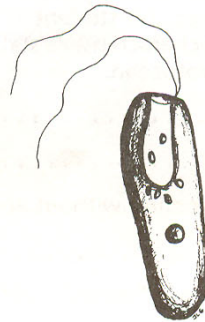
Actinosphaerium

70–80 μm in diameter



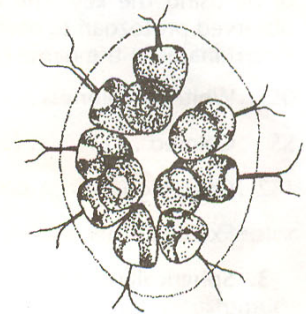
Eudorina

10–24 μm in diameter



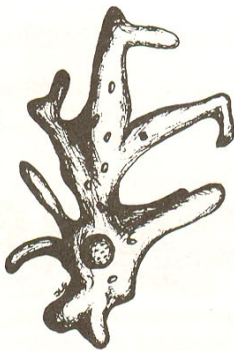
Chilomonas sp.

20–40 μm



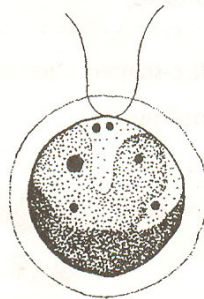
Pandorina

colony from 20–250 μm in diameter



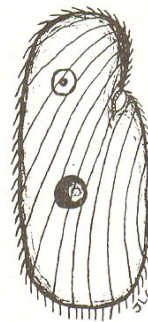
Ameoba proteus

up to 600 μm or more, elongated



Chlamydomonas

5–12 μm in length



Colpidium sp.

50–70 μm in length



Diffugia

60–580 μm by 40–240 μm